

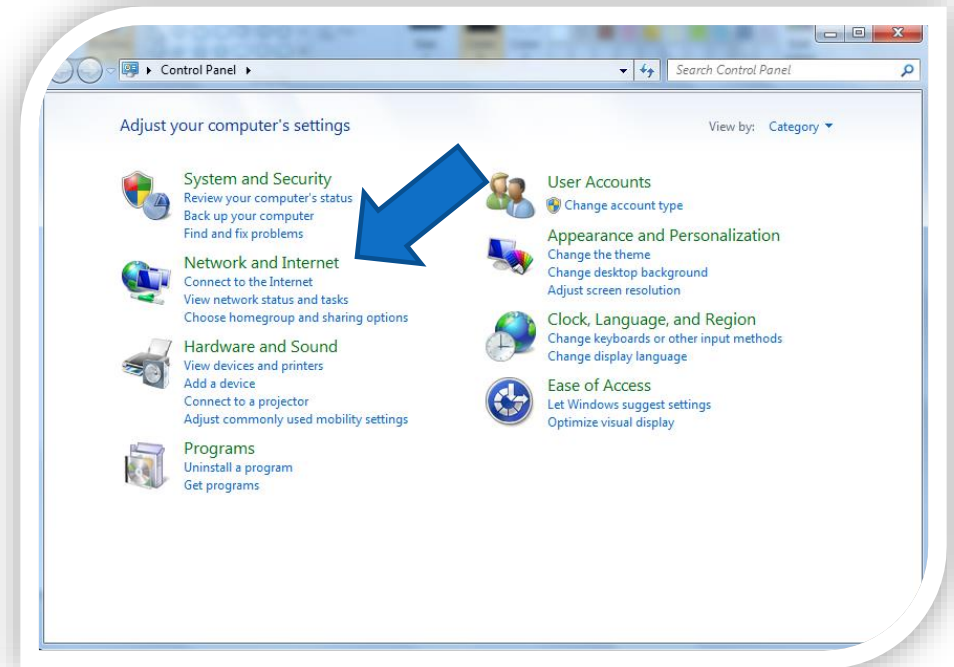
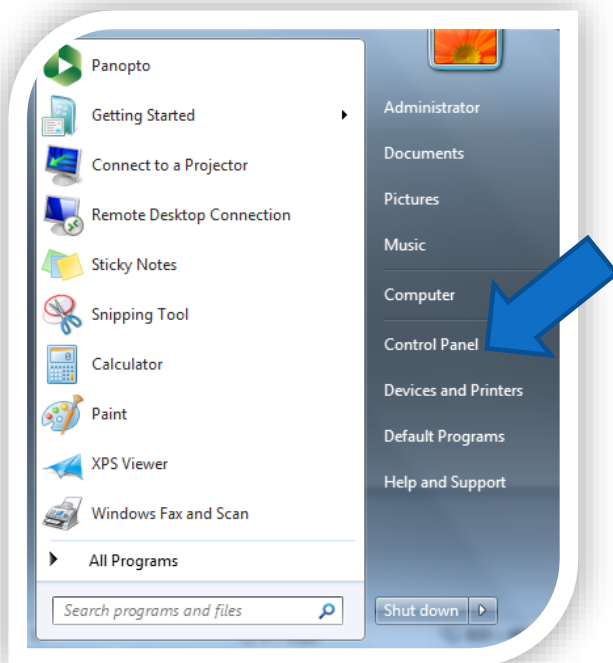
Uni-WiFi

A GUIDE TO CONNECTING TO Uni-WiFi ON WINDOWS 7

UNFORTUNATELY DUE TO THE WAY WINDOWS 7 OPERATES, YOU MUST MANUALLY CONFIGURE THE NETWORK FOR FIRST CONNECTIONS

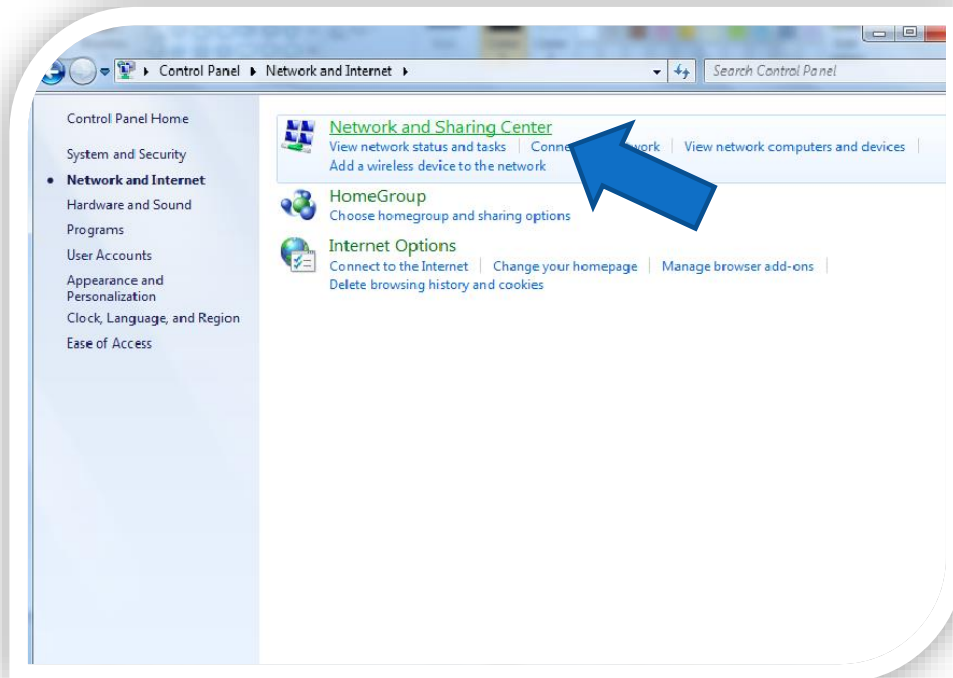
UNI-WIFI ON WINDOWS 7

- First, select **start** and choose the **control panel**. In this panel, choose **Network and Internet**

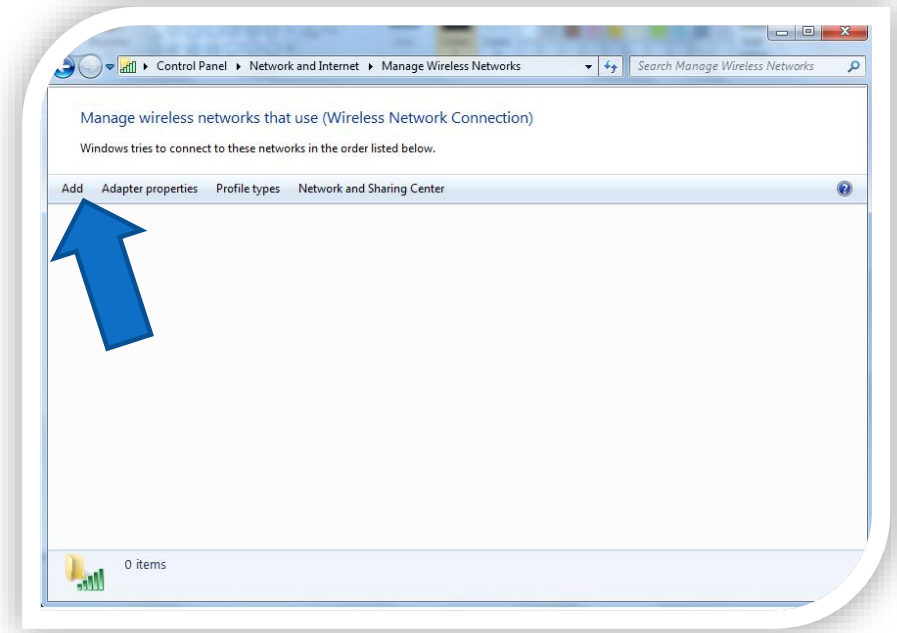


UNI-WIFI ON WINDOWS 7

- Next **Network and Sharing Centre**

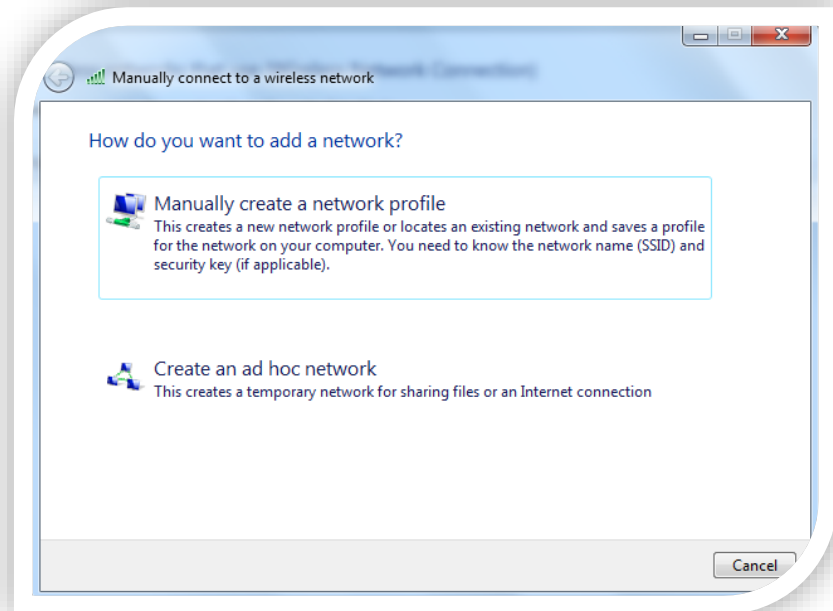


- In the **Network and Sharing Centre**, select **Manage wireless networks** and click **Add**.



UNI-WIFI ON WINDOWS 7

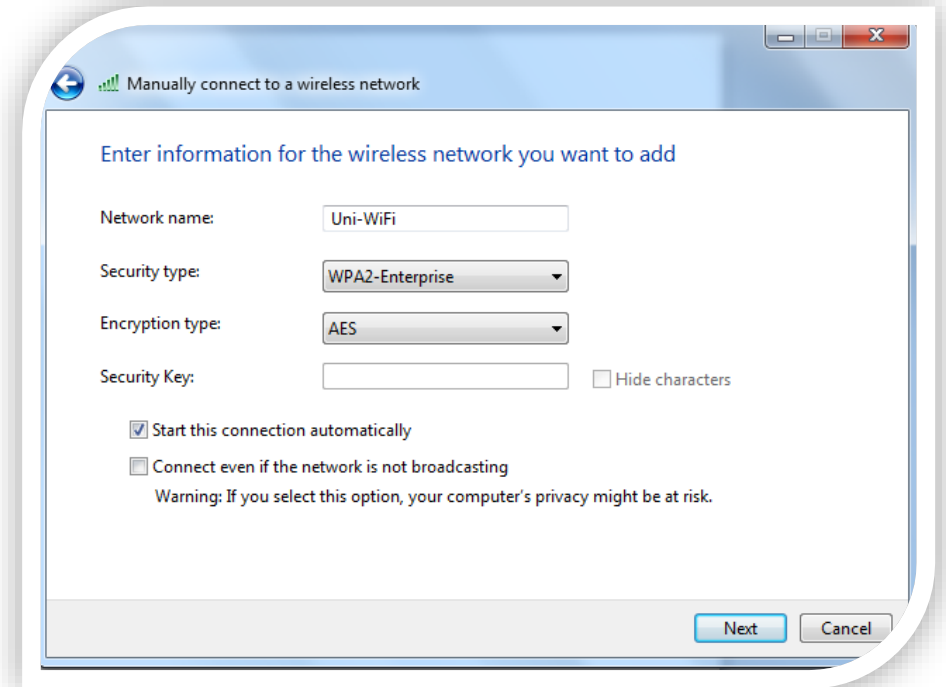
- Select **Manually create a network profile**



Enter the details as shown below:

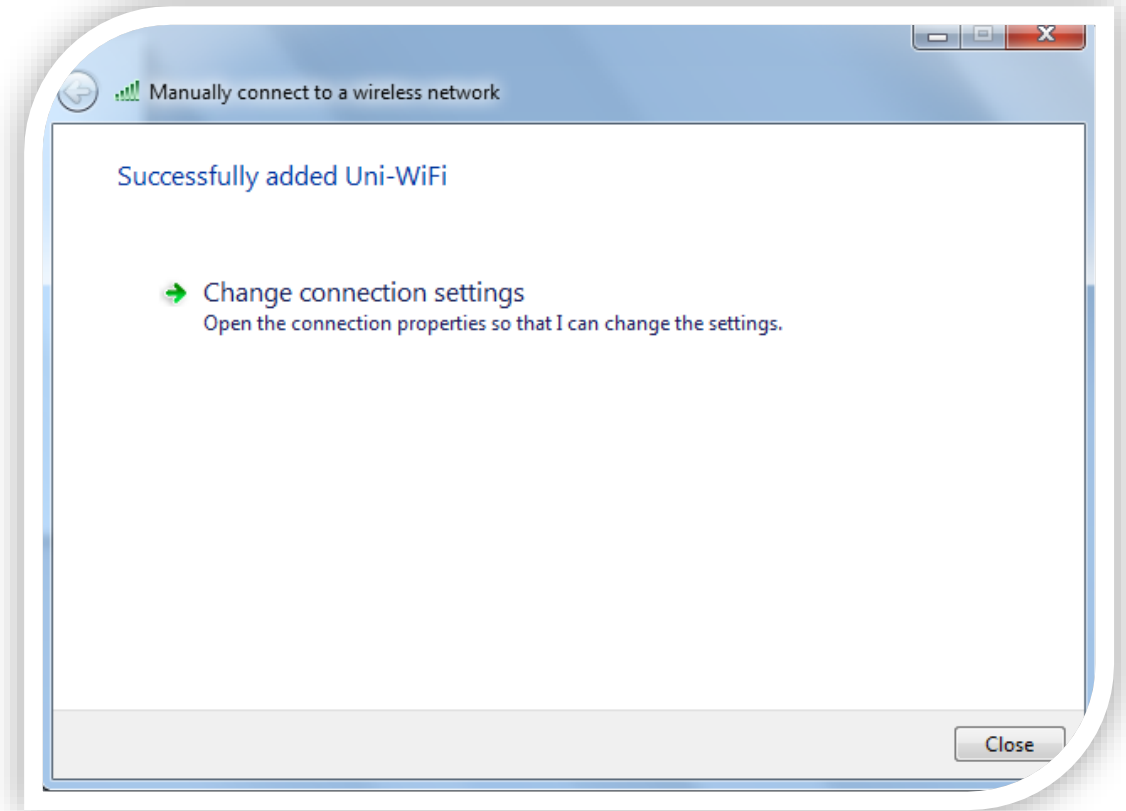
- **Network name: Uni-WiFi *Important (this is case sensitive)**
- **Security type: WPA2-Enterprise**
- **Encryption type: AES**

Click **Next**

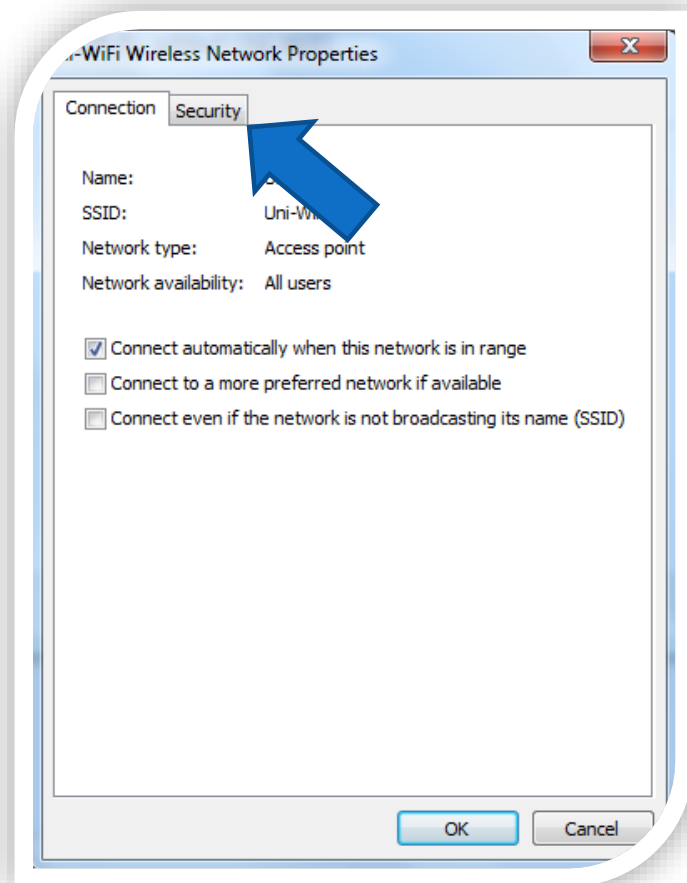


UNI-WIFI ON WINDOWS 7

- At this stage it will say **Successfully added Uni-WiFi**, if it does not, go back and double check the information. There are still settings to configure as you will not be able to connect right now, click **Change connection settings**.

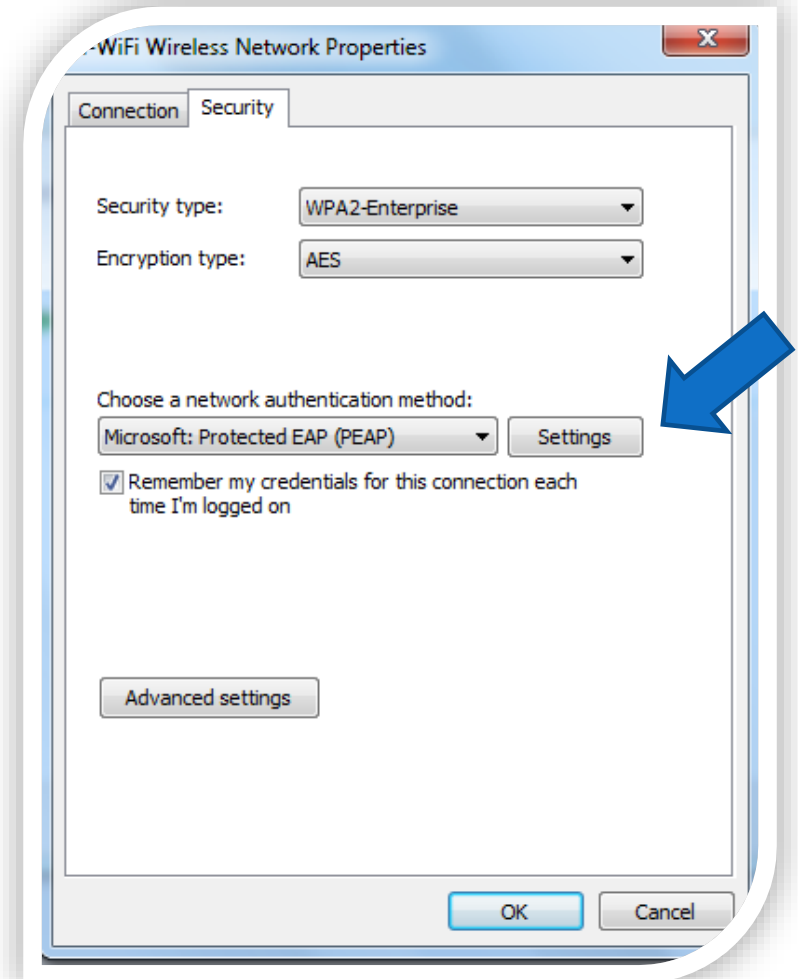


UNI-WIFI ON WINDOWS 7

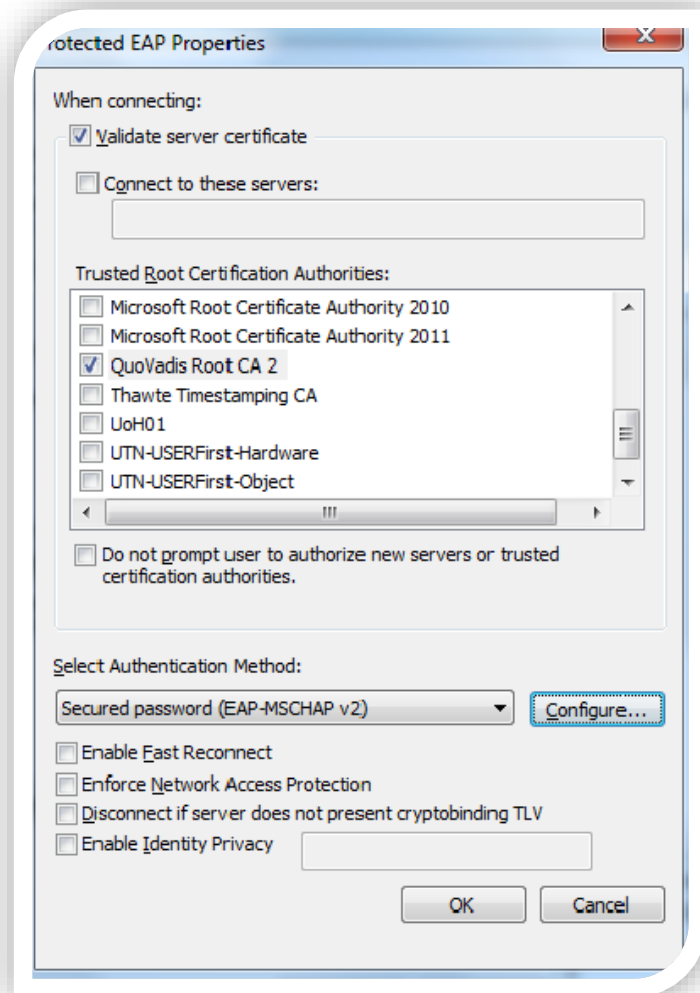


- Select the Security tab

- Then select **Microsoft Protected EAP (PEAP)** and click on the **Settings**

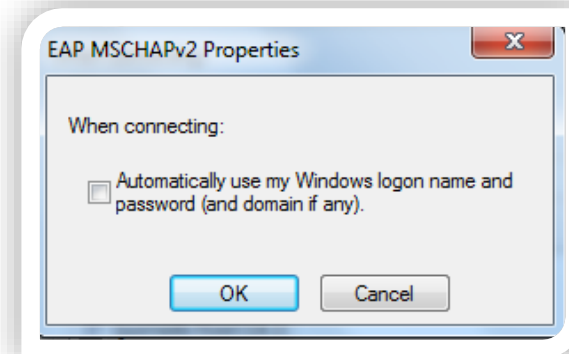


UNI-WIFI ON WINDOWS 7



- ✓ Tick the box for **Validate Server Certificate**.
- ✓ Tick the box for **QuoVadis Root CA 2**
- ✗ Un-tick the box for **Do not prompt user...** and also **Enable Fast Reconnect**

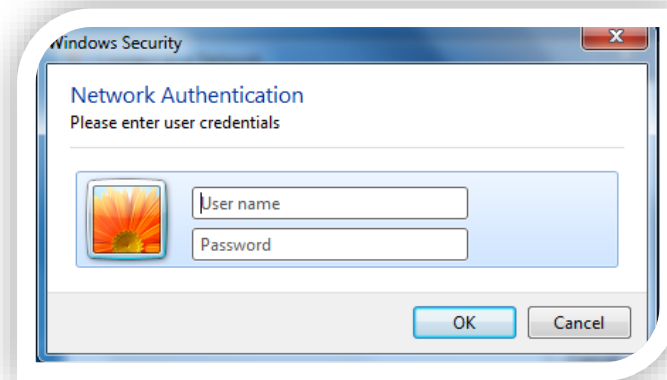
Select **Configure** on the **Secured password (EAP-MSCHAP v2)** option, and untick the box to **use my Windows logon name**, click **OK** to save and return



UNI-WIFI ON WINDOWS 7

Your device should now attempt to connect to the Wi-Fi

A pop-up box will appear, click on this will give you the login screen



Enter your university username and password and your device will connect to the wireless network, Uni-WiFi, and give you internet access