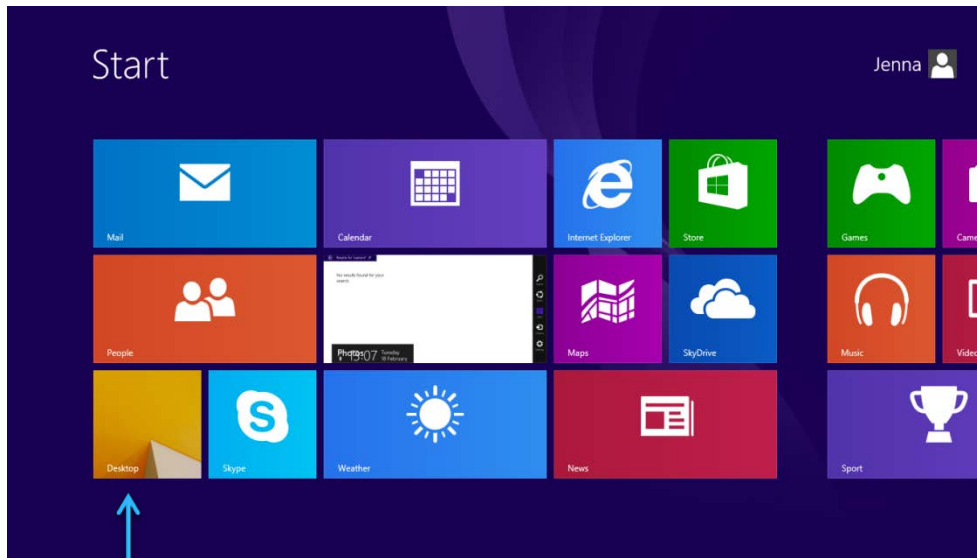


Uni-WiFi

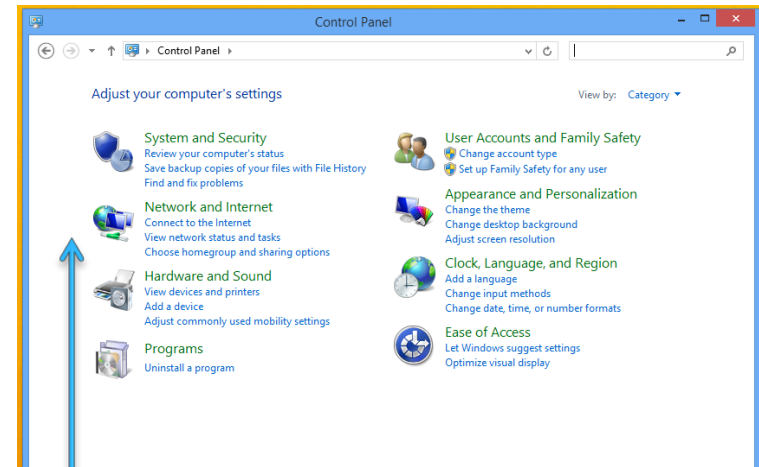
A Guide to Connecting to Uni-WiFi on Windows 8



Uni-WiFi on Windows 8



- Start by going to the **Desktop** and then go to the **Control Panel**

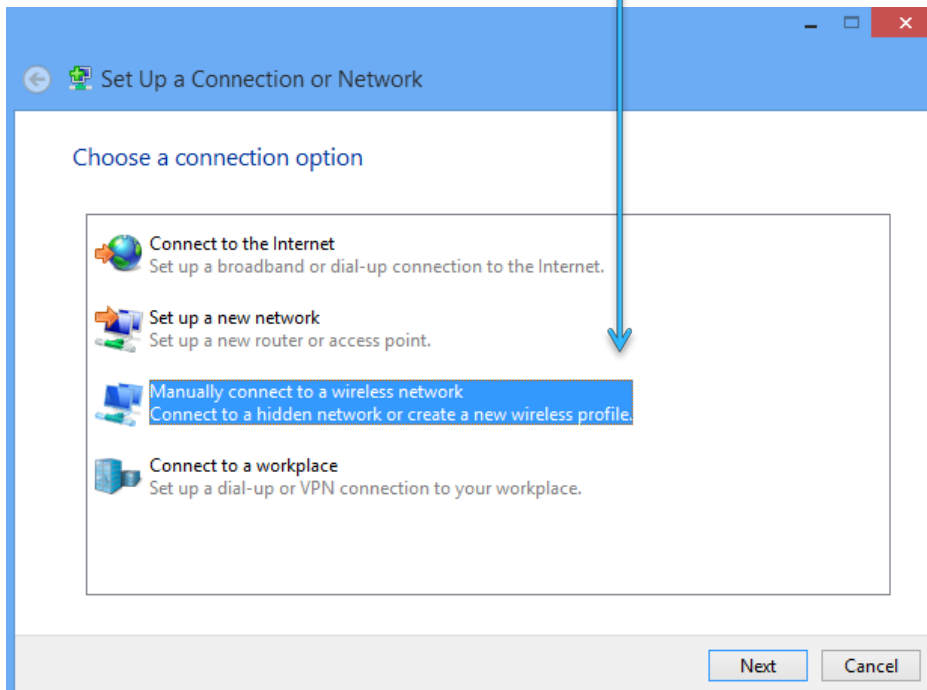


- Select **Network and Internet**
- Then **Network and Sharing Centre**

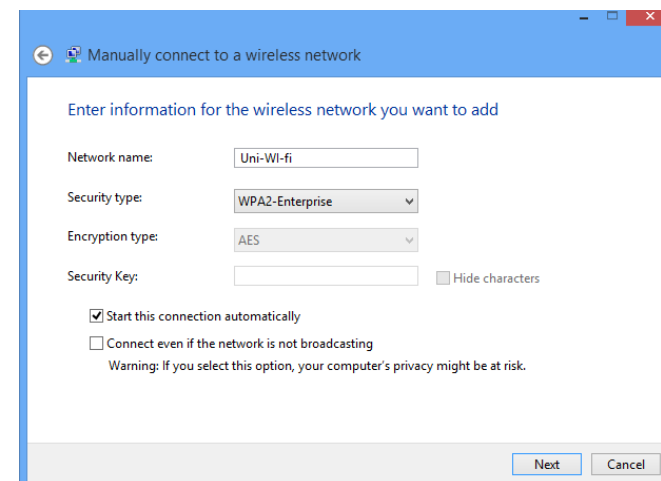


Uni-WiFi on Windows 8

- Choose **'Set up a new connection or network'**
- And then **'Manually connect to a wireless network'**, click **Next**.



Enter the details as shown below:
Network Name: Uni-WiFi
Security Type: WPA2-Enterprise
Encryption Type: AES
Tick the **'Start this connection automatically'**, click **Next**



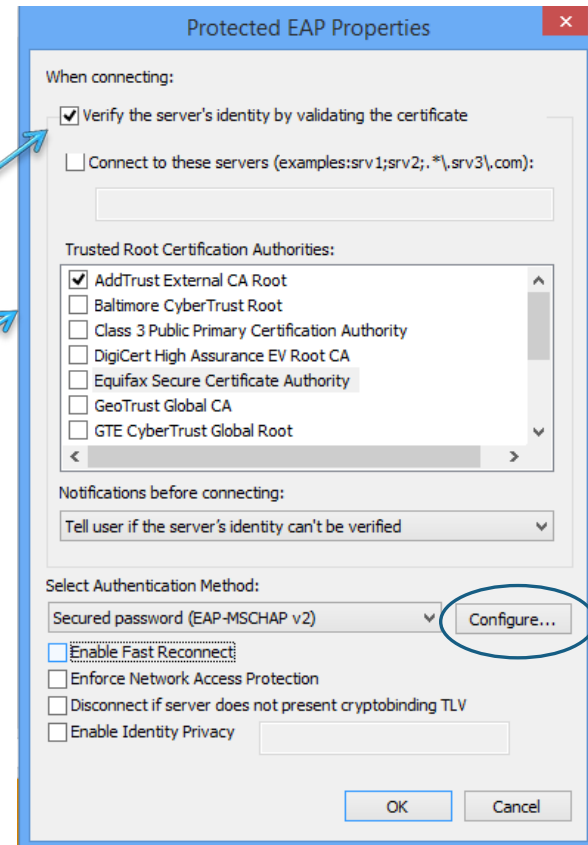
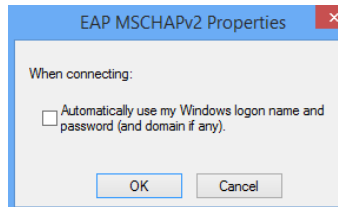


Uni-WiFi on Windows 8

It says that Uni-WiFi is successfully added, but at this stage you won't actually be able to connect. There are more settings to configure – click **change connection settings** to give the screen below.

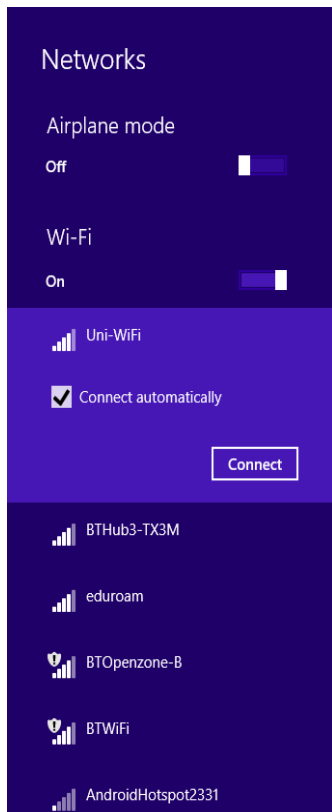
- ✓ Tick the box for **Verify the server's identity by validating the certificate**.
- ✓ Tick the box for **AddTrust External CA Root**.

Select **Configure** on the **Secured password (EAP-MSCHAP v2)** option, and un-tick the box to 'Automatically use my Windows logon name and password' as shown below.





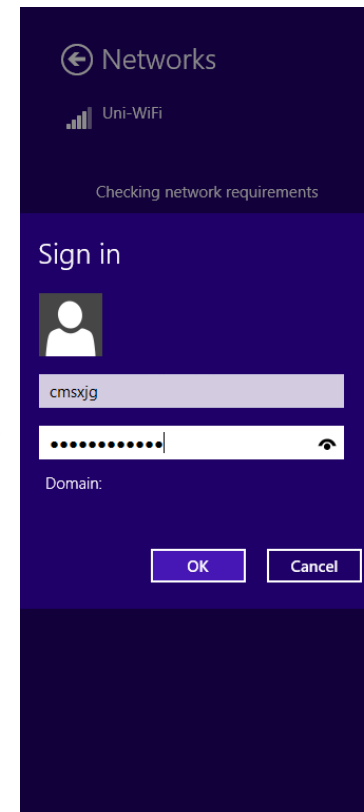
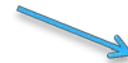
Uni-WiFi on Windows 8



Select Uni-WiFi from the list of Networks, and click '**Connect**'.

Enter your university username and password, Click OK.

You should now be connected to Uni-WiFi.





Uni-WiFi on Windows 8

If you have any problems connecting to Uni-WiFi please call IT Support on
01484 473737.

You can also find guides for connecting to Uni-WiFi on other devices such
as iPhone, Android and Windows 7 at

<http://www.hud.ac.uk/students/it/wifi/uni-wifi/>